



ATLANTIC CAPESIZE INDEX

**2ND
OCTOBER
2023**

SIMPSON | SPENCE | YOUNG®

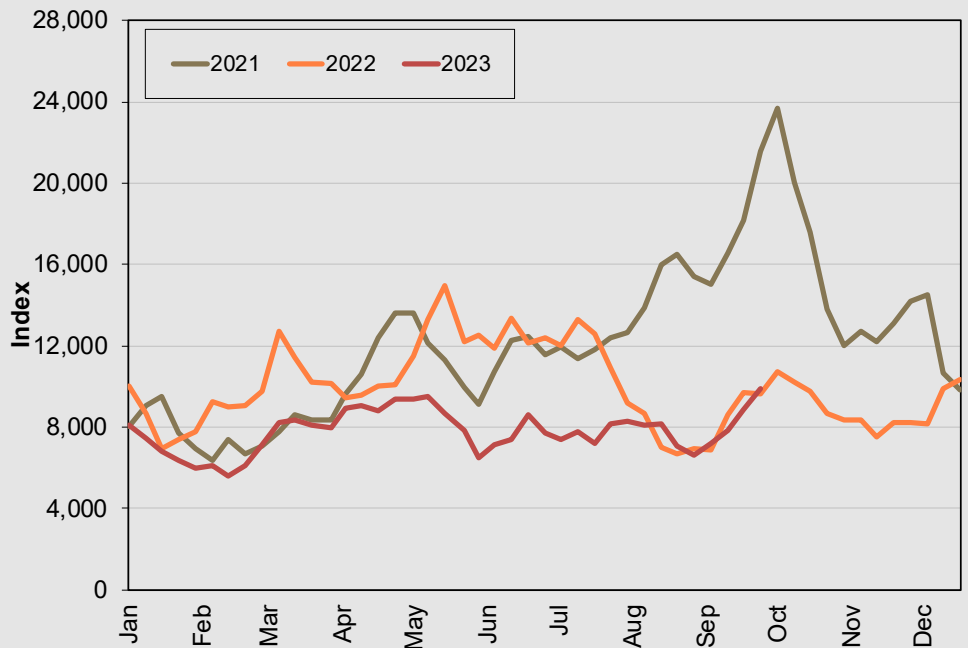
The SSY Atlantic Capesize Index increased 1,028 points week-on-week to 9,912 points, the highest level since May. Fronthaul and trans-Atlantic earnings continued their upwards momentum, with SSY's fronthaul earnings up \$2,650/day to \$41,150/day, while the round-voyage charter rates rose \$6,100/day to \$23,250/day.

For more information contact Roar Adland/David Beard

The Atlantic Capesize Index started at 5,000 points on 2 October 1989 and has since been subject to periodic updating to reflect changing trade patterns. The latest update was on 26 June 2023.

Trade	Cargo Size	Weight	25/09/2023 \$/t	02/10/2023 \$/t
NARVIK/ROTTERDAM	150,000/10%	10.0%	5.35	6.50
TUBARAO/ROTTERDAM	160,000/10%	10.0%	9.55	11.80
RICHARDS BAY/ROTTERDAM	150,000/10%	10.0%	8.25	10.50
SEVEN ISLANDS/ROTTERDAM	170,000/10%	10.0%	9.30	10.80
PUERTO BOLIVAR/ROTTERDAM	150,000/10%	10.0%	11.85	13.35
NOUADHIBOU/QINGDAO	140,000/10%	10.0%	23.75	24.60
TUBARAO/JAPAN	160,000/10%	10.0%	22.10	23.05
TUBARAO/QINGDAO	160,000/10%	10.0%	22.40	23.35
T/C TRIP CONT/FAR EAST	180,000 DWT	10.0%	6.50	6.95
T/C TRANSATLANTIC ROUND	180,000 DWT	10.0%	2.90	3.93
		100.0%		
CALCULATED INDEX			8,884	9,912
Change on Previous Index			+1,043	+1,028
Change on Four Weeks Ago			+1,803	+3,272
Change on Previous Year			-788	+248
Change on Two Years Ago			-7,669	-8,245
			\$/Day	\$/Day
T/C TRIP CONT/FAR EAST	180,000 DWT		38,500	41,150
T/C TRANSATLANTIC ROUND	180,000 DWT		17,150	23,250

SSY Atlantic Capesize Index



SSY Consultancy & Research Ltd
T: +44 (0)20 7977 7404
F: +44 (0) 20 7265 1549

E: research@ssy.co.uk
www.ssyonline.com

Tower Bridge House | St Katharine's Way | London | E1W 1BQ
ASSOCIATE OFFICES | Athens | Copenhagen | Dubai | Geneva | Genoa | Hamburg | Hong Kong | Houston |
Kristiansand | London | Madrid | Mumbai | New York | Oslo | São Paulo | Seoul | Shanghai | Singapore | Stamford |
Sydney | Tokyo | Vancouver | Varna | Zug |

This publication has been provided for general information only. It does not constitute advice or amount to a recommendation to enter or not to enter any specific transaction. While every care has been taken to ensure that the information in this publication is accurate, SSY Consultancy & Research Ltd. can accept no responsibility for any errors or omissions or any consequences arising therefrom. Figures are based on the latest available information, which is subject to subsequent revision and correction. The views expressed are those of SSY Consultancy and Research Ltd. and do not necessarily reflect the views of any other associated company. Re-producing any material from this report without permission from SSY is strictly prohibited. All Market Reports are subject to our standard terms and conditions available at www.ssyonline.com/client-tscs/ or on request.