



SIMPSON | SPENCE | YOUNG®

# ATLANTIC CAPESIZE INDEX

17TH  
APRIL  
2023

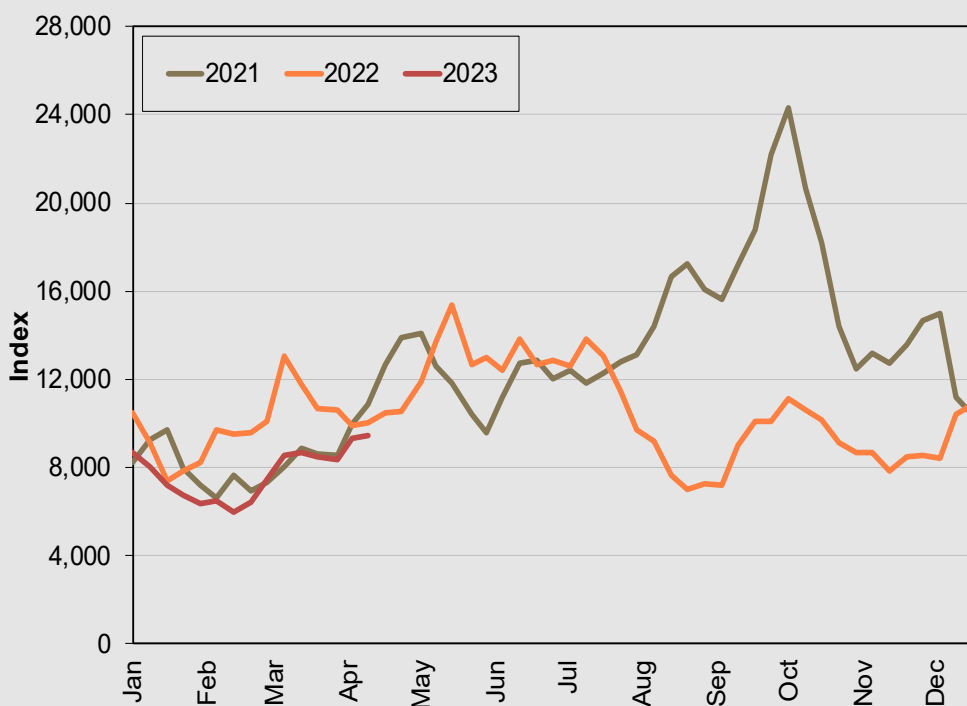
The SSY Atlantic Capesize Index rose 93 points on the week to 9,434 points. SSY's assessed fronthaul rate is up \$500/day on the week at \$36,000/day, while the round-voyage rate is up \$1,150 to \$17,500/day.

*For more information contact Alastair Stevenson/David Beard*

*The Atlantic Capesize Index started at 5,000 points on 2 October 1989 and has since been subject to periodic updating to reflect changing trade patterns. The latest update was on 17 July 2015.*

			11/04/2023	17/04/2023
Trade	Cargo Size	Weight	\$/t	\$/t
NARVIK/ROTTERDAM	150,000/10%	10.0%	5.35	5.25
TUBARAO/ROTTERDAM	160,000/10%	10.0%	10.60	10.40
RICHARDS BAY/ROTTERDAM	150,000/10%	10.0%	10.10	11.25
HAMPTON ROADS/ROTTERDAM	120,000/10%	10.0%	14.45	14.25
PUERTO BOLIVAR/ROTTERDAM	150,000/10%	10.0%	11.20	11.20
NOUADHIBOU/QINGDAO	140,000/10%	10.0%	23.70	24.50
TUBARAO/JAPAN	160,000/10%	10.0%	22.55	21.95
TUBARAO/QINGDAO	160,000/10%	10.0%	22.85	22.25
T/C TRIP CONT/FAR EAST	180,000 DWT	10.0%	6.00	6.08
T/C TRANSATLANTIC ROUND	180,000 DWT	10.0%	2.76	2.96
		100.0%		
<b>CALCULATED INDEX</b>			<b>9,341</b>	<b>9,434</b>
Change on Previous Index			+1,010	+93
Change on Four Weeks Ago			+789	+763
Change on Previous Year			-537	-571
Change on Two Years Ago			+765	-533
			<b>\$/Day</b>	<b>\$/Day</b>
T/C TRIP CONT/FAR EAST	180,000 DWT		35,500	36,000
T/C TRANSATLANTIC ROUND	180,000 DWT		16,350	17,500

SSY Atlantic Capesize Index



SSY Consultancy & Research Ltd  
T: +44 (0)20 7977 7404  
F: +44 (0) 20 7265 1549

E: [research@ssy.co.uk](mailto:research@ssy.co.uk)  
[www.ssyonline.com](http://www.ssyonline.com)

Tower Bridge House | St Katharine's Way | London | E1W 1BQ  
ASSOCIATE OFFICES | Athens | Copenhagen | Dubai | Geneva | Genoa | Hong Kong | Houston | Kristiansand | London  
| Madrid | Mumbai | New York | Oslo | São Paulo | Seoul | Shanghai | Singapore | Stamford | Sydney | Tokyo | Vancouver  
| Varna | Zug |

This publication has been provided for general information only. It does not constitute advice or amount to a recommendation to enter or not to enter any specific transaction. While every care has been taken to ensure that the information in this publication is accurate, SSY Consultancy & Research Ltd, can accept no responsibility for any errors or omissions or any consequences arising therefrom. Figures are based on the latest available information, which is subject to subsequent revision and correction. The views expressed are those of SSY Consultancy and Research Ltd, and do not necessarily reflect the views of any other associated company. Re-producing any material from this report without permission from SSY is strictly prohibited. All Market Reports are subject to our standard terms and conditions available at [www.ssyonline.com/client-tscs/](http://www.ssyonline.com/client-tscs/) or on request.