



SIMPSON | SPENCE | YOUNG®

ATLANTIC CAPESIZE INDEX

12TH
SEPTEMBER
2022

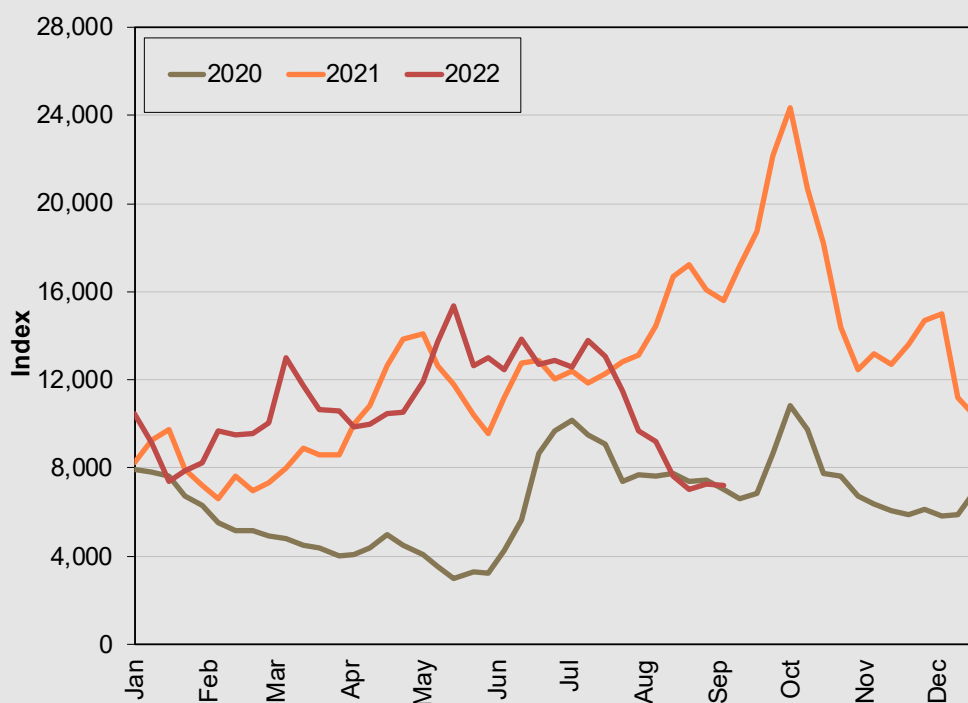
At 7,220 points, the SSY Atlantic Capesize Index was close to unchanged. In the past week, the round-voyage and fronthaul rates edged up by \$1,000/day and \$1,650/day to \$3,500/day and \$20,000/day, respectively.

For more information contact David Beard/Derek Langston

The Atlantic Capesize Index started at 5,000 points on 2 October 1989 and has since been subject to periodic updating to reflect changing trade patterns. The latest update was on 17 July 2015.

			05/09/2022	12/09/2022
Trade	Cargo Size	Weight	\$/t	\$/t
NARVIK/ROTTERDAM	150,000/10%	10.0%	4.60	4.55
TUBARAO/ROTTERDAM	160,000/10%	10.0%	8.55	8.45
RICHARDS BAY/ROTTERDAM	150,000/10%	10.0%	6.90	8.05
HAMPTON ROADS/ROTTERDAM	120,000/10%	10.0%	11.90	11.80
PUERTO BOLIVAR/ROTTERDAM	150,000/10%	10.0%	8.90	8.80
NOUADHIBOU/QINGDAO	140,000/10%	10.0%	20.45	19.65
TUBARAO/JAPAN	160,000/10%	10.0%	19.25	18.40
TUBARAO/QINGDAO	160,000/10%	10.0%	19.65	18.80
T/C TRIP CONT/FAR EAST	180,000 DWT	10.0%	3.10	3.38
T/C TRANSATLANTIC ROUND	180,000 DWT	10.0%	0.42	0.59
			100.0%	
CALCULATED INDEX			7,275	7,220
Change on Previous Index			+253	-55
Change on Four Weeks Ago			-2,434	-1,963
Change on Previous Year			-8,788	-8,401
Change on Two Years Ago			-190	+219

SSY Atlantic Capesize Index



SSY Consultancy & Research Ltd
T: +44 (0)20 7977 7404
F: +44 (0) 20 7265 1549

E: research@ssy.co.uk
www.ssyonline.com

Tower Bridge House | St Katharine's Way | London | E1W 1BQ

ASSOCIATE OFFICES | Athens | Copenhagen | Dubai | Geneva | Genoa | Hong Kong | Houston | London | Madrid | Mumbai | New York | Oslo | São Paulo | Shanghai | Singapore | Stamford | Sydney | Tokyo | Vancouver | Varna | Zug |

This publication has been provided for general information only. It does not constitute advice or amount to a recommendation to enter or not to enter any specific transaction. While every care has been taken to ensure that the information in this publication is accurate, SSY Consultancy & Research Ltd., can accept no responsibility for any errors or omissions or any consequences arising therefrom. Figures are based on the latest available information, which is subject to subsequent revision and correction. The views expressed are those of SSY Consultancy and Research Ltd., and do not necessarily reflect the views of any other associated company. Re-producing any material from this report without permission from SSY is strictly prohibited. All Market Reports are subject to our standard terms and conditions available at www.ssyonline.com/client-tscs/ or on request.