



SIMPSON | SPENCE | YOUNG®

# ATLANTIC CAPESIZE INDEX

31ST  
JANUARY  
2022

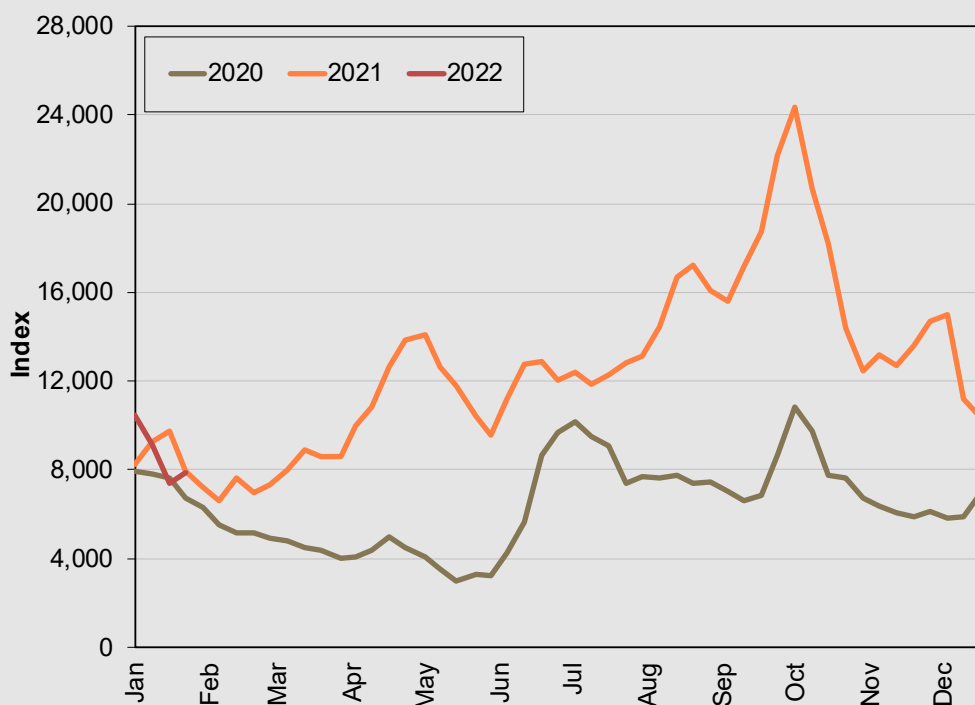
From a ten-month low of 7,404 points, the SSY Atlantic Capesize Index climbed by 450 points week-on-week to 7,854. The round-voyage rate edged up to \$11,350/day however, the fronthaul rate declined by \$1,350/day to \$26,650/day.

For more information contact David Beard/Derek Langston

The Atlantic Capesize Index started at 5,000 points on 2 October 1989 and has since been subject to periodic updating to reflect changing trade patterns. The latest update was on 17 July 2015.

			24/01/2022	31/01/2022
Trade	Cargo Size	Weight	\$/t	\$/t
NARVIK/ROTTERDAM	150,000/10%	10.0%	4.75	4.80
TUBARAO/ROTTERDAM	160,000/10%	10.0%	8.05	8.55
RICHARDS BAY/ROTTERDAM	150,000/10%	10.0%	6.70	7.20
HAMPTON ROADS/ROTTERDAM	120,000/10%	10.0%	13.25	13.30
PUERTO BOLIVAR/ROTTERDAM	150,000/10%	10.0%	10.15	10.20
NOUADHIBOU/QINGDAO	140,000/10%	10.0%	18.20	20.30
TUBARAO/JAPAN	160,000/10%	10.0%	16.90	19.00
TUBARAO/QINGDAO	160,000/10%	10.0%	17.30	19.40
T/C TRIP CONT/FAR EAST	180,000 DWT	10.0%	4.73	4.50
T/C TRANSATLANTIC ROUND	180,000 DWT	10.0%	1.90	1.92
		100.0%		
<b>CALCULATED INDEX</b>			<b>7,404</b>	<b>7,854</b>
Change on Previous Index			-1,725	+450
Change on Four Weeks Ago			-3,770	-2,491
Change on Previous Year			-2,317	-95
Change on Two Years Ago			-234	-1,130

## SSY Atlantic Capesize Index



SSY Consultancy & Research Ltd  
T: +44 (0)20 7977 7404  
F: +44 (0) 20 7265 1549

E: [research@ssy.co.uk](mailto:research@ssy.co.uk)  
[www.ssyonline.com](http://www.ssyonline.com)

Tower Bridge House | St Katharine's Way | London | E1W 1BQ

ASSOCIATE OFFICES | Athens | Copenhagen | Dubai | Geneva | Hong Kong | Houston | London | Madrid | Mumbai | New York | Oslo | São Paulo | Shanghai | Singapore | Sydney | Tokyo | Vancouver | Varna | Zug |

This publication has been provided for general information only. It does not constitute advice or amount to a recommendation to enter or not to enter any specific transaction. While every care has been taken to ensure that the information in this publication is accurate, SSY Consultancy & Research Ltd., can accept no responsibility for any errors or omissions or any consequences arising therefrom. Figures are based on the latest available information, which is subject to subsequent revision and correction. The views expressed are those of SSY Consultancy and Research Ltd., and do not necessarily reflect the views of any other associated company. Re-producing any material from this report without permission from SSY is strictly prohibited. All Market Reports are subject to our standard terms and conditions available at [www.ssyonline.com/client-tscs/](http://www.ssyonline.com/client-tscs/) or on request.