



SIMPSON | SPENCE | YOUNG®

# PACIFIC CAPESIZE INDEX

22ND  
FEBRUARY  
2021

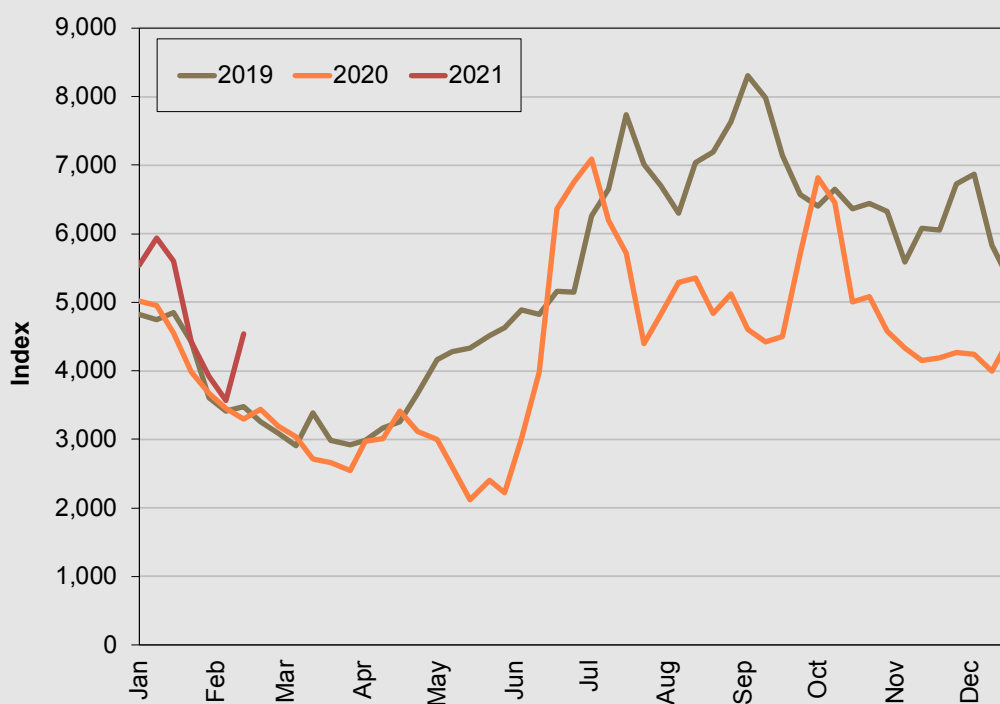
Breaking a run of four consecutive weekly declines, the SSY Pacific Capesize Index climbed by 968 points to 4,533. The W.Australia-China iron ore spot voyage rate rose by \$1.25/t to \$7.05/t, while there was a \$5,600/day increase in the round-voyage rate to \$11,850/day.

For more information contact David Beard/Derek Langston

The Pacific Capesize Index started at 5,000 points on 27 December 1995 and has since been subject to periodic updating to reflect changing trade patterns. The latest update was on 17 July 2015.

Trade	Cargo Size	Weight	15/02/2021	22/02/2021
			\$/t	\$/t
RICHARDS BAY/MUNDRA	150,000/10%	10.0%	6.70	8.80
DAMPIER/QINGDAO	150,000/10%	10.0%	5.80	7.05
SALDAHNA BAY/QINGDAO	150,000/10%	10.0%	10.35	12.95
RICHARDS BAY/FANGCHENG	150,000/10%	10.0%	9.40	11.50
CAPE LAMBERT/ROTTERDAM	160,000/10%	10.0%	8.05	9.45
QUEENSLAND/JAPAN	150,000/10%	10.0%	6.95	8.35
QUEENSLAND/ROTTERDAM	150,000/10%	10.0%	9.90	11.70
NSW/ZHOUSHAN	130,000/10%	10.0%	8.30	9.70
T/C TRIP FAR EAST/CONT	180,000 DWT	10.0%	-0.46	0.11
T/C TRANSPACIFIC ROUND	180,000 DWT	10.0%	1.06	2.00
		100.0%		
<b>CALCULATED INDEX</b>			<b>3,565</b>	<b>4,533</b>
Change on Previous Index			-353	+968
Change on Four Weeks Ago			-2,375	-1,061
Change on Previous Year			+270	+1,096
Change on Two Years Ago			+149	+1,062

## SSY Pacific Capesize Index



SSY Consultancy & Research Ltd  
T: +44 (0)20 7977 7404  
F: +44 (0) 20 7265 1549

E: [research@ssy.co.uk](mailto:research@ssy.co.uk)  
[www.ssyonline.com](http://www.ssyonline.com)

Tower Bridge House | St Katharine's Way | London | E1W 1BQ  
ASSOCIATE OFFICES | Bergen | Bermuda | Copenhagen | Dubai | Geneva | Hong Kong | Houston | London | Madrid | Miami | Mumbai | New York | Oslo | São Paulo | Shanghai | Singapore | Sydney | Tokyo | Vancouver | Varna | Zug |

While every care has been taken to ensure that the information in this publication is accurate, SSY can accept no responsibility for any errors or omissions or any consequences arising therefrom. Figures are based on the latest available information, which is subject to subsequent revision and correction. The views expressed are those of SSY Consultancy and Research Ltd and do not necessarily reflect the views of any other associated company. Reproducing any material from this report without permission from SSY is strictly prohibited. Please click [here](#) to view our terms and conditions in section 6.2.